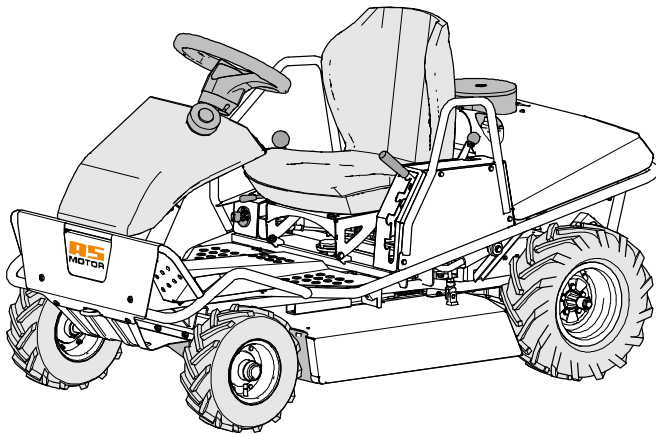




Operator's Manual



Ride-on-Allmäher®

AS 800 FreeRider + AS 799 Rider

From serial number: AS 800 FreeRider: 030117100001, AS 799 Rider: 030017100001

Issued: 13.10.2017, V18.0

en-Translation of the Original Operator's Manual

Notes on the operating manual

Dear customer,

Congratulations on your purchase. You have acquired a reliable quality product by "AS-Motor Germany".

This product has been manufactured according to modern manufacturing methods and comprehensive quality assurance measures. Only when you are satisfied with your device, we have attained our goal.

These operating instructions contain important information to help you avoid hazards and to increase the reliability and the life span of the device.



Read the operating instructions before using the device. Share these operating instructions and the operating instructions of the engine with other users of the device.

Contact

If you have questions concerning your device, please contact your dealer or call our customer service (+49 7973 9123-0).

For international AS partners, please see: www.as-motor.de.

Device data

Please fill in all data referring to your device. When ordering spare parts, provide your dealer with the serial and engine numbers.

Serial number (see manufacturer's certificate or type plate):

Engine number:

Date of purchase:

Address of dealer:

Intended use

The device is intended for cutting and mulching grass or similar vegetation in well maintained areas that must be mowed at least once a year.

Only use attachments and cutting tools authorised by "AS-Motor Germany".

Any other use exceeding this purpose is inadmissible.

Observe the instructions chapter for Maintenance. Otherwise, operational safety is endangered.

The user of the device is responsible for accidents or damage that can happen to other persons or their property.

The device **must not** be used:

- To cut hard objects, rocks, rubble, or pieces of wood.
- To trim bushes, hedges, and shrubbery.
- To cut plants in flower pots or planters or on rooftops.
- To clean (vacuum) footpaths.
- As shredder for shredding tree and hedge cuttings.
- As drive unit for work tools and any type of tool sets that are not authorised by "AS-Motor Germany".

The device is not licensed for driving on public roads.

Contents

Notes on the operating manual	2	Driving	18
Contact	2	Brakes (devices without foot brake).....	18
Device data	2	Brakes (devices with foot brake).....	18
Intended use	2	Driving.....	18
Explanation of the symbols	5	Reversing.....	18
Symbols in the instructions.....	5	Differential lock (if existing).....	19
Symbols on the device.....	5	Switching off and parking	19
Type overview	6	Transport	19
Safety instructions	7	Transport on pallets.....	19
Get informed!.....	7	Transport of ready-to-use device.....	20
User restrictions and hours of operation..	7	Towing.....	21
Safe handling of fuel.....	7	Disconnecting the drive.....	21
Check the device prior to use.....	8	Maintenance	22
Danger area.....	8	Maintenance and cleaning position.....	22
Use caution during operation.....	9	Maintenance overview.....	23
Prior to mowing.....	9	Cleaning the device.....	25
Use caution when mowing.....	10	General inspection.....	25
Caution when mowing slopes.....	10	Checking the safety functions.....	25
Caution when using accessories.....	11	Checking the parking brake.....	25
When work is completed.....	12	Check the foot brake (if existing).....	25
Hydraulic components.....	12	Grease lubrication.....	26
Use caution during maintenance and re- pair.....	12	Chain lubrication.....	26
Device description	13	Checking the blade.....	26
Control elements	14	Checking the blade clutch.....	27
Front area.....	14	Maintaining the engine.....	27
Control lever at seat.....	14	Checking the engine oil level.....	27
Moving the device without drive.....	15	Checking the spark plugs.....	28
Information on mowing	16	Maintaining the air filter.....	28
Prior to starting	16	Checking and charging the battery.....	28
Checking the oil level.....	16	Hydrostat transmission.....	29
Fuel.....	16	Assembly	29
Tanking up.....	16	Scope of delivery.....	29
Adjusting the seating position.....	16	Unpacking.....	29
Starting	17	Mounting.....	30
Safety switches.....	17	Storage	30
Starting the engine.....	17	Storing the device.....	30
Engaging the blade.....	17	Longer storage.....	31
		Restarting.....	31
		Spare parts	31
		Wear parts	31
		Disposal	31
		Warranty	31

Troubleshooting..... 32
Technical data..... 35
Accessories..... 37
Declaration of conformity..... 38

Explanation of the symbols

Symbols in the instructions

In these operating instructions, the following symbols are used to denote special dangers.



Warning.
These symbols denote special dangers.



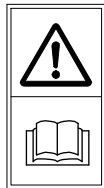
Prohibition sign.
These symbols denote inadmissible procedures.



Directive sign.
These symbols denote required protective measures.

Symbols on the device

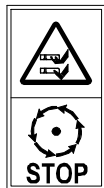
The following symbols are placed on the device to inform you must be careful and attentive when using the device:



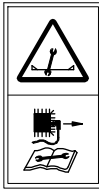
Working with the device requires extreme cautiousness.
Read the operating instructions before you use the device.



Risk of injury!
Make sure that no one is within the danger zone of the device.
Objects may be ejected.



The quickly rotating blade can cause life threatening injuries or immense property damage! Be especially careful to keep your hands and feet away from the blade when the device is put into operation.



Prior to any repair and maintenance work, pull off the spark plug connector.



Risk of tipping!
When positioned sideways to the slope, the device is stable up to 18° (in accordance with the standard measuring method).



Prior to any repair and maintenance work, remove the ignition key.



Clean the ventilation grid!
The cooling air of the motor is sucked in through the ventilation grid of the engine cover. Always keep the entire surface open and free!



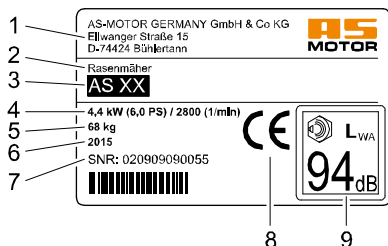
Noise is causing health problems. Use personal ear protection to avoid hearing damage.



Do not clean the device with water spray or high-pressure cleaner!

Type plate

The type plate on the device provides you with information on the device type and the technical data.



- 1 Name and address of the manufacturer
- 2 Device designation
- 3 Type designation
- 4 Rated power output in kW / engine speed
- 5 Weight
- 6 Year of manufacture
- 7 Serial number
- 8 CE marking
- 9 Sound level L_{WA}

Type overview

In this operating manual, the following device types are described.

Depending on their equipment, the corresponding descriptions of this operating manual apply.

Type-dependent equipment	AS 799	AS 800
Differential lock	-	X
Foot brake	-	X

Safety instructions

Get informed!

For your safety, read these operating instructions carefully. Familiarize yourself with the control elements and the proper use of the device. Share these operating instructions with other users of the device.

Have skilled personnel who were trained by AS-Motor show you the safe handling of the device before you work with it for the first time.

Get familiar with the device in a wide, open and flat terrain first.

User restrictions and hours of operation

Never allow children or persons who are not familiar with the operating instructions to use the device. Persons under 18 years of age may operate the device only under proper supervision. Local regulations determine the minimum age of the operator and the operating times.

Unsuitable for operation of the device are persons who

- are under the influence of alcohol, drugs or reaction retarding medicines.
- have physical and mental/emotional impairments.
- are tired or sick.



People fitted with pace makers are not allowed to touch any current carrying parts of the ignition system.

Safe handling of fuel

Fuel is toxic and highly flammable. There is a burn and explosion hazard!

Keep fuel away from ignition sources and do not smoke during handling.

Do not inhale fuel vapours, they are dangerous to your health.



Use gloves and avoid skin contact with the fuel.

Always refuel outdoors when the engine is cold and standing still. When doing so, always use a filler spout or a funnel.

Do not spill any fuel or do not let fuel enter canalisation or drain away.

When fuel has overflowed, do not start the device until the fuel vapours have evaporated (wipe dry). Move the device away from the spilled fuel.

Always close the tank cap tightly and do not open it while the engine is running or the device is still hot.

Empty the fuel only when outdoors. Use the approved container for this or run the fuel tank empty.

Store the fuel away from children and keep it in a suitable container in a dark, cool and dry place.

Never store the device when there is fuel in the tank inside a building where fuel vapours might come into contact with open fire or sparks.

Immediately replace the fuel tank or tank cap if they are damaged (authorised service centre).

First aid

When swallowing fuel or inhaling fuel vapours, do not force vomiting and immediately consult a doctor.

In case of skin contact, immediately wash with water and soap. Change your soiled clothing as soon as you can.

Measures in case of a fire

In case of a fire, use foam, dry powder extinguisher, or carbon dioxide (CO₂). Never douse with water!

Check the device prior to use

Prior to each use, check the blade, protection skirt, ejection rubber, drive and fastening parts, cables and cable connections for proper working condition and firm seating by visual inspection.

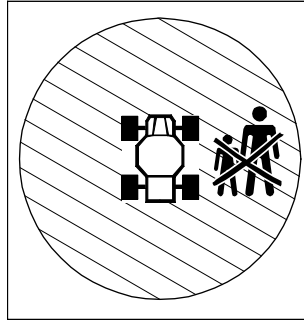
Never use the device if covers, impact protection, ejection rubber or protection skirt are defective or not mounted.

Do not remove, change or override any safety devices or control elements.

Observe the maintenance instructions (see Maintenance).

Prior to use, check RC functions and safety functions of the device (see Maintenance) to ensure safe operation of the device.

Danger area



Within the danger area of the device, there is a risk of injury.

The rotating knife can cause injuries and objects can be thrown out. The area in front of and to the right of the device is especially dangerous.

On slopes, the device can topple over and slide towards persons or run them over.

Make sure

- that nobody else is in the area that will be mowed.
- that people are never positioned in the direction of travel in front of the device.
- that nobody is positioned on the slope below the device.
- that you have a complete overview of the danger area at all times.
- that you keep your hands and feet away from the rotating parts.

Use caution during operation

Danger of injury during motor start

The motor must not be started:

- When fuel was spilled.
- In closed or badly ventilated rooms (danger of poisoning!).
- When other persons are in close proximity.

Risk of injury when the blade is running

Switch off the blade and wait until the blade stops

- when you drive on surfaces other than grass.
- when you do not mow.
- when you cannot overlook completely the area to be mowed.
- when the device must be manoeuvred out of a dangerous position.
- when the trafficability of the area to be mowed is too unsafe.

Risk of injury when the motor is running

Switch off the engine, wait for the blade and the engine to stop and remove the ignition key

- before you transport the device.
- before you step away from the device, even for just a short time.
- before you clean or check the device or before you carry out work on the device.
- before you unblock or unclog the discharge area.

Risk of injury due to uncontrolled rolling

Actuate the parking brake after each stop and before shutting off the engine. By doing so, you can prevent the device from rolling away in an uncontrolled way.

Risk of burns

Do not touch the muffler, the engine, and the gearbox. These parts become very hot during operation and you can get burned. If a jumpy movement occurs, the risk of additional injuries can result.

Prior to mowing

Personal protective measures



During mowing, always wear safety shoes with good grip and long trousers. Do not mow with open sandals or while shoeless.



Wear safety gloves to protect yourself against injuries and vibrations.



Noise is causing health problems. Use personal ear protection to avoid hearing damage. Wear safety glasses and headgear.

Ask your specialised dealer about suitable protective equipment.

Preparing the mowing area

Prior to mowing, carefully check the perimeter of the lawn. Remove rocks, pieces of wood, bones, wires, and other objects that could be picked up and thrown out by the device.

Use caution when mowing

Risk of injury

Stay within shouting distance to other people who can help you in case of an emergency.

Risk of injury caused by ejected objects. Never mow when persons, children, pets or objects are in the danger area.

Please observe the following information on the danger area.

The area in front of and to the right of the device is especially dangerous.

Keep your hands and feet away from the rotating parts.

Only mow during daylight or with adequate artificial lighting. Never mow in the event of uncertain weather conditions and risk of lightning.

Be especially carefully when mowing on soft ground, nearby landfills, ditches, dikes and water edges.

Do not transport any person on the device.

Be extremely cautious when moving in reverse.

Pay attention to traffic when working close to roads.

Vibrations

When the device is used over a longer period of time, vibrations can cause disturbances in the blood supply of the hands. A generally accepted usage time cannot be determined.

- Use gloves.
- Take breaks on time.

Have an authorised service centre check the device

- when the blade has hit an object.
- if the device starts to vibrate unusually severely.

Mowing surfaces with fire hazard

- Carry a sufficient amount of suitable extinguishing agent.
- If side inclination is too great, fuel may leak from the carburetor or the tank. This poses a fire hazard!
- Observe the mowed surface also after mowing is completed to ensure that no fire will start.

To avoid risk of fire, keep the following components free of dirt, grass, hay, leaking oil, grease, etc:

- Engine
- Silencer (manifold, guard, clearances)
- Battery
- Area around the fuel tank

Caution when mowing slopes

If the device, while in use, stops on slopes or the engine cuts out, the device can roll away. Immediately activate the parking brake to prevent the device from rolling away.

Sliding and tipping risk



Risk of injury during mowing on slopes due to tipping over or sliding. Please observe the following notices.

- Do not mow excessively steep slopes. For safety reasons, use the device only on a less than 18° slopes.
- Please observe the following information on the danger area.
- Use a clinometer if you are not familiar with the slope (see accessories).
- Never unlock the drive on a slope because the device can roll away.
- Always mow uphill and downhill, avoid mowing in horizontal direction.
- Never drive on a slope that you cannot drive up backwards without sliding.
- Be extremely cautious when changing the direction.

- Do not turn on a slope.
- Prior to entering the slope, always activate the differential lock. Move on slopes only when the differential lock is activated (if existing).
- Always keep the speed low when moving on slopes.
- Do not start abruptly and do not brake abruptly.
- Hold the steering wheel tightly so that the device does not swerve.

When the uphill wheels encounter obstacles such as roots, branches, rocks, mounds etc., the device can tilt or slip.

- Only mow when you are familiar with the terrain and the terrain is clear of obstacles.
- Pay attention to bumps, holes, and other visible hazards.
- Do not mow close to danger zones (e.g. walls, steep declines, water edges etc.).

Danger due to uncontrolled slipping

Only park the device on flat surfaces.

Proceed with extreme caution in case the ground is wet or loose. The danger of slipping is very high on cut growth, no matter if it is wet or dry.

If the mower starts to slide you cannot regain control by actuating the brake.

Uncontrolled sliding can occur because of:

- slope angles that are too steep.
- slippery ground.
- poor tire grip.
- speeding.
- abrupt braking.
- an inappropriate task for the device.

If the device tilts or slips

- Never try to stop a tilting or sliding device. Severe injuries can result.
- Remove leaking fluids (oil, fuel, battery acid) from the device and the floor. Deposit of contaminated soil environment friendly according to the local regulation.
- Undetectable damage may have occurred to the device. In case of malfunctions, there is a risk of injury. Have an authorised service centre check the device.

Caution when using accessories

Be careful when pulling loads:

- Only use tow-bars authorized by “AS-Motor Germany”.
- Observe the maximum load carrying capacity (Technical data).
- Observe the safety instructions in the operating instructions of the tow-bar.
- Only transport loads that you can handle safely.
- Only drive on slopes up to 10°.
- Do not take tight corners.
- Be extremely cautious when moving in reverse.

When work is completed

After mowing, always close the fuel valve.

Prior to leaving the device, wait until the motor comes to a standstill and pull off the ignition key.

After switching it off, let the device cool down for at least 20 minutes before you store it in a dry, closed, sufficiently ventilated room.

Never store the device when there is fuel in the tank inside a building where fuel vapours might come into contact with open fire or sparks.

Hydraulic components

The device contains hydraulic components.

In case of improper repair or damage to the hydraulic components, pressurised hydraulic fluid may leak. The fluid may enter the skin and thus cause severe injuries.

- Only carry out maintenance work as described in these operating instructions.
- If hydraulic fluid has entered your skin, contact a doctor immediately.

Use caution during maintenance and repair

Only carry out work as described in these operating instructions. Have an authorised service centre perform all other work.

Only use the blades and spare parts authorised by “AS-Motor Germany”. Unauthorised blades and spare parts can cause severe injuries.

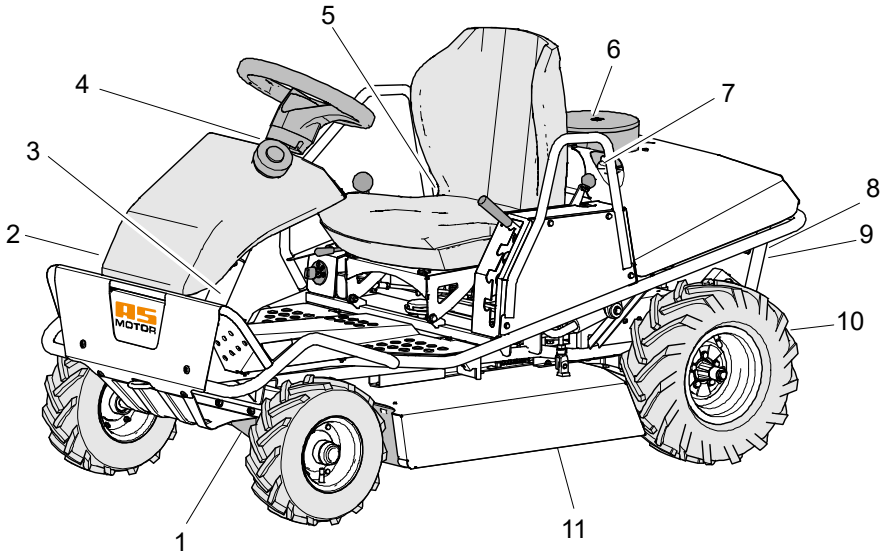
Prior to all maintenance work, wait until the engine comes to a standstill and pull off the spark plug connector.

We explicitly point out that, in accordance with the Product Liability Act, we are not liable for damages that were caused by our devices if

- worn or damaged parts were not repaired or replaced on time.
- these damages were caused by improper repair.
- when changing a part, our original parts or parts authorised by us were not used.
- the repair work was not carried out by an authorised service station.

The same applies for spare parts and accessories.

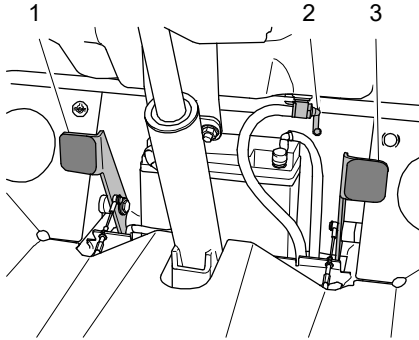
Device description



- 1 Protection skirt
- 2 Fuel valve
- 3 Type plate
- 4 Tank cap
- 5 Fuses circuit protection
- 6 Ventilation grid
- 7 Engine oil filler neck
- 8 Gearbox fan
- 9 Unlocking drive
- 10 Ejection rubber
- 11 Impact protection/cover

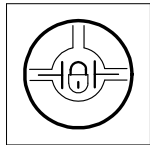
Control elements

Front area



Differential lock (1 – AS 800 only)

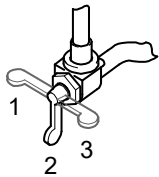
With the left foot pedal, actuate the differential lock.



Pedal is actuated:
Differential lock is on

Pedal is not actuated:
Differential lock is off

Fuel valve (2)



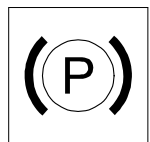
1: Reserve (R)

2: Open

3: Closed (C)

Foot brake/parking brake (3 – AS 800 only)

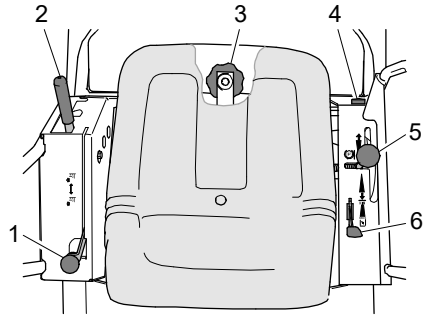
When you actuate the right foot pedal, the parking brake is applied. Press the foot pedal for activation of the brake only in exceptional situations because the mower stops abruptly.



Brakes:

Release the drive lever and press the right foot pedal (3 – AS 800 only) down.

Control lever at seat



Blade clutch lever (1)

The blade clutch lever is a protective device. When you declutch the blade, the blade comes to a standstill within 5 seconds.



Declutching the blade:

Set the accelerator lever to MIN. Guide the blade clutch lever backwards.

Clutching the blade:

Slowly pull forward the lever.

Cutting height adjustment (2)



The cutting height of the lawn can be set to four positions.

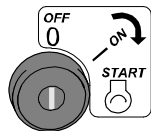
The top position is the transport position.

Sitting position

Slacken the star grip (3) and move the seat to the desired position. Then tighten the star grip.

Ignition lock (4)

The ignition lock has three positions.



OFF: Ignition off.
The key can be removed.

ON: Ignition on.

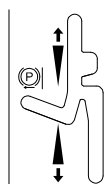
START: Electric starter on.

Drive lever with parking brake (5)

The drive lever is required for moving the mower forward, reversing as well as stopping the mower. The further you move the lever in one or the other direction, the faster the device moves.

To prevent accidental switching from moving forward to reversing, the guide of the drive lever is equipped with another indentation.

In the neutral position, the parking brake is actuated.



Moving forward

Stopping (neutral position/parking brake)

Reversing

Accelerator lever with choke (6)

Via the accelerator lever, you change the engine speed and control the engine performance. When you want to start the device when the engine is cold, move the accelerator lever to choke position (choke is closed).



MIN: Idling speed. Press the accelerator lever all the way forward.

MAX: Full throttle position.

Choke: Choke is closed (only for cold engine start). Pull the accelerator lever all the way back.

Moving the device without drive

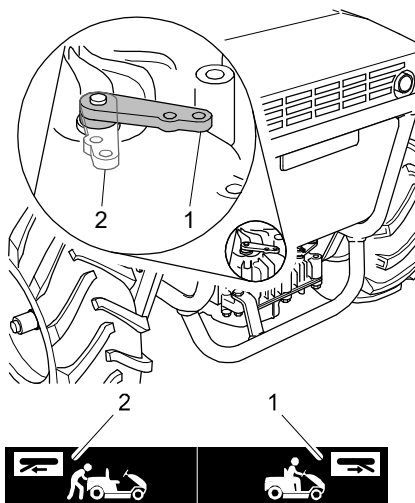


Notice!

When the engine is started while the drive is unlocked, the hydraulic drive can be destroyed.

Never start the engine when the drive is unlocked.

To push the mower without engine drive, unlock the drive at the rear of the device and release the parking brake. The mower can only be braked via the parking brake.



1: = Locked

2: = Unlocked

Information on mowing

Prior to mowing, check your device for completeness, proper functioning, and cleanliness. A dirty ventilation grid causes overheating of the engine, this can damage the engine. A dirty protective grid at the silencer poses a fire hazard.

Frequent engagement and disengagement of the clutch increases wear of the blade drive belt and the blade brake. Especially in case of high grass, clutch engagement leads to overload.

To keep the area well maintained, mow frequently and keep the grass short.

Only mow with a sharp and undamaged blade. Have the blade sharpened and balanced regularly (by authorised service centre).

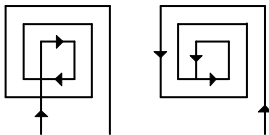
Do not mow when the grass is wet or when it is raining. The turf may be damaged and there is a danger of slipping!

Turn the device around only in already mown sections. Do not leave the device unattended while the engine is running.

Set the cutting height so that the blade does not touch the ground even in case of terrain unevenness.

Always set the blade to transport position when you do not mow.

For mowing, always turn the accelerator lever to full throttle to achieve the best mowing performance.



To avoid blockage during the ejection of grass, we recommend, for flat terrain, to proceed according to the mowing patterns. Mulch is shredded into much smaller pieces when you mow the terrain once again in the opposite direction.

Prior to starting

Checking the oil level

Caution! Before mowing, always check the engine oil level and the oil level in the hydrostat (see Maintenance).

Fuel

As fuel, use unleaded petrol (see operating instructions of the engine manufacturer).

You can use E10 petrol. Do not store E10 petrol longer than 30 days.

Tanking up



Danger!

Fuel is ignited by hot engine parts.

Prior to filling up, switch off the engine and wait for at least 20 minutes until the engine has cooled down. Observe the safety instructions regarding the fuel!

Filling up with fuel

1. For filling, use a canister with filler spout or a funnel.
2. Open the canister carefully so that existing excess pressure is slowly reduced.
3. Open the tank cap carefully so that existing excess pressure is slowly reduced and no fuel sprays out.
4. Fill the fuel tank.
5. Tightly close the tank cap again.

Adjusting the seating position

Adjust the seat in the longitudinal direction until your feet are positioned on the inclined support plates and you sit comfortably.

Starting



Danger!

During startup, there is a risk of injury caused by the rotating blade.

Make sure that no one is within the danger zone of the blade.

Safety switches

The device is equipped with safety switches. To start the engine, the following requirements must be met:

- A driver sits in the driver seat.
- The blade clutch is switched off.
- The lever for cutting height adjustment is in transport position.
- The drive lever is in neutral position.

If the engine is running and the driver leaves the seat, the engine is shut off.

If the engine was shut down due to a safety switch, turn the ignition key to position “Ignition off”. By this, you will avoid discharging the battery.

Starting the engine

Start the device only when it is positioned on even and firm terrain

1. Open the fuel valve.
2. Sit down on the driver seat.
3. Turn off the blade clutch.
4. Move the lever for the cutting height adjustment to transport position.
5. Move the drive lever to neutral position.
6. When the engine is cold:
Move the accelerator lever to cold start position (choke).
When the engine is warm:
Move the accelerator lever to middle position.
7. Turn the ignition key to starting position.
8. Once the engine has started, release the ignition key.
9. Only for cold start:
Move the accelerator lever to middle position.
10. For mowing, set the accelerator lever to the maximum speed.

If the engine does not start after 5 seconds, release the key. Wait for approx. 15 seconds before trying to start the device again.

Engaging the blade

Only engage the blade when it turns freely and does not come into contact with objects or the floor.

Do not engage the blade in uncut grass because the blade drive otherwise becomes overloaded, can be damaged, or can wear prematurely.

1. Start the engine.
2. Move the lever for the cutting height adjustment to the highest cutting position.
3. Pull the blade clutch lever slowly forward - the blade starts up.
4. Set the desired cutting height.

If you set the cutting height to transport position during mowing, the blade is automatically disengaged.

Disengaging the blade when running over paths:

1. Quickly pull the blade clutch lever rearwards.

Driving



Warning!

Device can move jerkily. If you are standing on the device, injuries can result.

Do not stand up while the device is moving.

Do not drive while standing up.



Danger!

Mowing on a slope is dangerous. There is a risk of tilting and slipping.

Observe the safety instruction for mowing on slopes.

In case of a hazardous situation, switch off the drive and declutch the blade.

Brakes (devices without foot brake)

In order to stop, move the drive lever slowly to neutral position.

The parking brake acts on the rear wheels.

Brakes (devices with foot brake)



Warning!

The foot brake does not take effect if you hold on to the accelerator lever during braking.

Release the accelerator lever when you actuate the foot brake.

To stop, move the drive lever slowly to neutral position.

The parking brake acts on the rear wheels. When the foot brake is actuated, the drive lever swivels all the way to neutral position/parking brake.

Use the actuation via foot pedal only in exceptional circumstances because the mower stops abruptly.

Driving

1. Start the engine.
2. Release the parking brake.
3. Slowly move the drive lever to the desired driving direction. The further the lever is moved away from the neutral position, the faster the mower moves.
4. To stop, move the drive lever slowly to neutral position or step on the foot brake.

Reversing



Danger!

Danger of injury when reversing.

Make sure that your path is clear of obstacles and that no other persons stand behind your device.

Always reverse slowly. Be especially cautious when the blade is engaged.

The special shape of the guide of the drive lever serves for preventing accidental switching from moving forward to reversing.

1. Release the parking brake.
2. Slowly move the drive lever to the rear. The more you move the lever away from the neutral position, the faster the mower moves.
3. To stop move the drive lever slowly to neutral position or step on the foot brake.

Differential lock (if existing)

The differential lock connects the two rear wheels rigidly to each other. This improves traction. Actuate the differential lock when a wheel slips.

Always actuate the differential lock when moving downhill. This improves the driving stability of the device. The risk of sliding or swerving of the rear is reduced and safe braking is possible.

Driving in curves while the differential lock is actuated is only possible with limitations.

To avoid excessive wear,

- actuate the differential lock only when the device is stopped, if possible.
- always step on the pedal all the way.
- release the differential lock when it is no longer absolutely needed.

Switching off and parking



Warning!

Risk of injury in case of unauthorised use.

Always remove the ignition key when you do not use the device.

1. Move the drive lever slowly to neutral position.
2. Turn the accelerator lever to idle speed.
3. Switch off the blade clutch.
4. Move the lever for the cutting height adjustment to transport position.
5. Actuate the parking brake.
6. Turn the ignition key to “ignition off”.
7. Wait for the engine to stop completely before you step away from the device.
8. Pull off the ignition key.
9. Close the fuel valve.

Transport

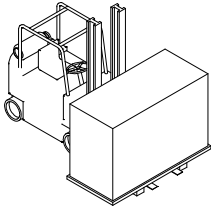
Transport the device on a freight vehicle or a trailer which is designed for a carrying capacity of at least as great as the empty weight of the device.

Transport on pallets

For transport over short distances, use a fork lift or a lift truck.

For longer distances, load the device with a fork lift onto a freight vehicle or trailer.

The user must be authorised to operate a fork lift. When the machine is lifted, all persons must step away from the working area of the fork lift.



Notice! Drive the fork lift completely under the longitudinal beams of the wooden pallets.

Transport of ready-to-use device



Warning!

Risk of injury due to the heavy weight of the device. The device can fall over and fall down and cause severe injuries.

Observe the following notices.

Do not stay in the tilting area of the device.

Prior to each transport, let the device cool down for at least 20 minutes. Close the fuel valve.

Loading

Use suitable ramps for loading that

- can carry the empty weight of the device + 200 kg.
- are wider than the device.
- have a slip-free surface.



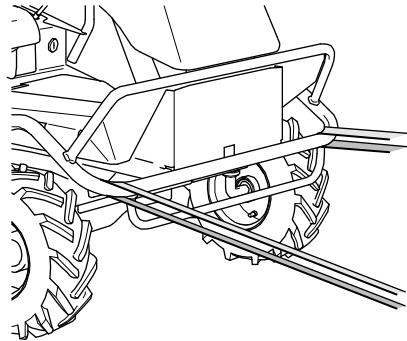
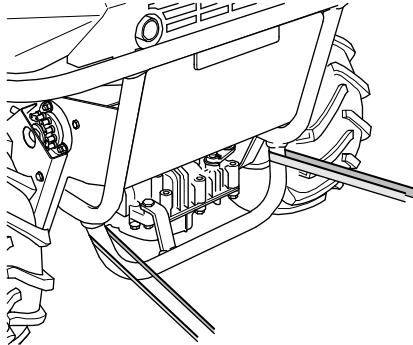
Notice!

Risk of damage due to incorrect fastening of straps.

Fasten the straps only at the points shown in the figure.

Do not overtighten the straps.

1. Put the device in front of the ramps and make sure that the ramps
 - are as wide as the wheel gauge of the device.
 - are tightly secured to the platform.
 - are not steeper than 15°.
2. Carefully drive the device via the ramps onto the platform.
3. Secure the device against rolling, sliding, tilting, and fuel leakage. Use straps that support the weight of the device.



4. Secure the device with belts to the frame elements that can hold the weight.

Unloading the device

1. Undo the transport fastenings.
2. Drive the device carefully down the ramps of the platform.

Towing



Danger!

The device can roll away without the drive.

Never unlock the drive in steep terrain without securing the device against rolling away.

If the engine cannot be started again, the device must be towed.

1. While using the brakes, let the device roll to terrain that is less steep.
2. Secure the device against rolling away or sliding.
3. Secure the device with a cable winch that has got enough load capacity.
4. For towing unlock the drive and release the parking brake.

Disconnecting the drive

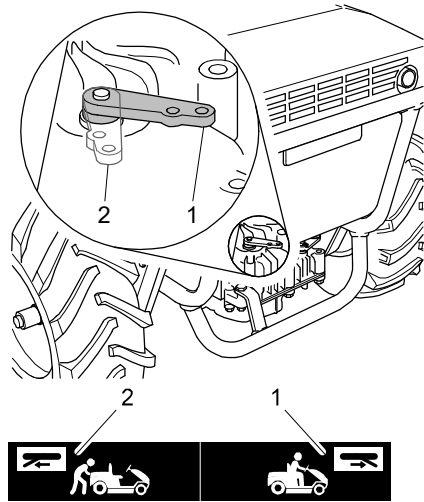


Notice!

When the engine is started while the drive is unlocked, the hydraulic drive can be destroyed.

Never start the engine when the drive is unlocked.

To push the mower without engine drive, unlock the drive at the rear of the device and release the parking brake. The mower can only be braked via the parking brake.



1: = Locked

2: = Unlocked

Maintenance



Warning!

Risk of injury due to unexpected movement. When inspections are carried out, the device can move unexpectedly.

Make sure that no persons or objects are in the danger area of the blade.

Make sure that no further hazards result from an unexpected movement.



Warning!

Risk of injury during maintenance and cleaning work when the engine is running.

Perform maintenance tasks only then with a running engine if this is required in the Maintenance table.

Prior to all maintenance and cleaning work when the engine is not running:

1. Let the device cool down for at least 20 minutes.
2. Close the fuel valve.
3. Disconnect the negative pole of the battery.

Improper maintenance can make the device unsafe for operation and result in accidents. Regular maintenance keeps you device ready for use.

Service the device according to the following maintenance instructions.

Contact an authorised service centre if problems during maintenance occur or if you determine deficiencies during one of the following inspections.

Maintenance and cleaning position



Warning!

Risk of injury due to the heavy weight of the device. The device can fall over and fall down and cause severe injuries.

Observe the following notices.

To perform maintenance, repair or cleaning tasks at the bottom of the device, you can lift or tilt the device.

- Lift the device only when on level and firm terrain.
- Use only lifting gear or ramps that are suitable for the weight of the device.
- Attach the lifting gear only to the main frame because only the main frame can carry the weight.
- Secure the device always against tilting, falling down or slipping.
- Do not stay in the tilting area of the device.
- Do not tilt the device more than indicated in the safety instructions regarding driving on the slope. Otherwise the device can tilt and the device can be damaged or contaminations can occur due to leaking fluid.
- Do not carry out tasks that can result in tilting, falling down or slipping of the device.

Maintenance overview

Component	Action	Maintenance interval	
		A	B
Device	Check for safe working condition (basic inspection).	■	▲
	Clean.	■	
	Customer service.		▲
Fuel	Check fuel level.	■	
	Is the tank cap closed?	■	
Tank, fuel valve, and fuel line	Check parts for leaks and check for good condition.	■	▲
Ventilation grid	Clean.	■	▲
Engine cooling	Clean.		▲
Spark plug	Check/replace.		▲
Air filter	Maintain.	■	■▲
Blade and fastening components	Check for wear and damage. See chapter Checking the blade.	■	▲
	Change.		▲
Blade brake	Does the blade function safely and does the blade come to a standstill within 5 seconds?	□	▲
Drive lever	Does the device stop when the lever is in neutral position (parking brake)?	□	▲
	Devices with foot brake: Does the lever move to neutral position when the foot brake is actuated?	■	▲
V-belt	Are the belts tensioned correctly, without fissures, and in good condition?		▲
Bowden cables	Check for proper function and ease of movement.	■	▲
Acceleration lever	Check for proper function.	□	▲
Chassis and impact protection	Check for rust and fissures and check the welding seams.	■	▲
	Are all protective devices and covers in place, fastened correctly and properly functioning?	■	▲
Label	Condition of the labels.	■	▲

Engine	For reliable information, see the operating manual of the engine manufacturer.	■	▲
	Check oil level (see operating instructions of the engine manufacturer).	■	▲
	Oil change.		▲
	Oil filter change.		▲
Parking brake	Check.	■	▲
Check the foot brake	Check the foot brake (if existing).	■	▲
Flammable material	Remove easily flammable debris buildup from the engine and the device.	■	▲
Steering	Check the clearance.	■	▲
Tyres	Check tyres and, if necessary, the tyre pressure.	■	▲
Safety switches	Check the switches at the driver seat, cutting height adjustment, and drive for proper function.	■	▲
Ignition lock	Check for proper function.	□	▲
Hydrostatic transmission	Check oil level.	■	▲
	Repair leaks.		▲
	Oil change after 50 h and every 200 h thereafter.		▲
Battery	Check the charging conditions.		▲
Lubrication	See chapter grease lubrication.	■	▲ ■

A Before and after each use.

B Annually or every 50 h.

■ By the user when the engine is not running.

□ By the user when the engine is running.

▲ By the authorised service centre.

Cleaning the device

After each use, you should clean the device thoroughly, especially the bottom side and the blade.

Stuck grass or dirt affect the grass discharge and the cutting quality. For a sufficient engine cooling, keep the engine cover, ventilation grid, and the engine clean.

For sufficient cooling of the hydrostat transmission, keep the gearbox casing and the area around the gearbox fan clean.

Fire hazard! Pay special attention so that components at the silencer are clean.

For cleaning use a hand brush. Remove stubborn soiling with a wooden or plastic spatula. Clean the outer housing parts with a cloth.

Do not rinse off the device with a water jet or high pressure cleaner! Do not use aggressive cleaning agents.

General inspection

To make sure that the device can be operated safely, check all nuts, bolts, screws, connection of fuel lines, air filters etc. regularly for firm seating. Check the ignition wire and the spark plug connectors for damage.

Immediately replace damaged or worn parts, especially covers, protection skirt, silencers or fuel tank (authorised service centre).

Check all parts that contain fluids for leaks and proper condition. These can be: Fuel tank, fuel valve, fuel lines, carburetor, engine, gears, battery, hydraulic system.

In case of leaks, contact an authorised service centre.

Checking the safety functions

Check the safety switches for proper function. It must not be possible to start the engine when:

- there is no driver on the driver's seat.
- The blade clutch is switched on.
- The lever for the cutting height adjustment is not in transport position.
- The drive lever is not in neutral position.

If the engine is running and the driver leaves the seat, the engine must shut down.

Checking the parking brake



Danger!

If the parking brake is incorrectly adjusted, the device can roll away.

Make sure that the parking brake is always functioning properly.

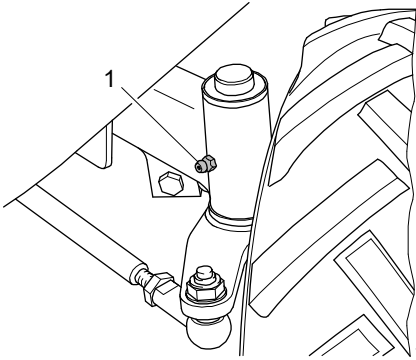
1. Place the device on a surface with a good grip (e.g. concrete or asphalt).
2. Switch off the engine.
3. Let the device cool down for at least 20 minutes.
4. Unlock the drive.
5. Activate the parking brake.
6. Try to push the device.

If the rear wheels lock up, the parking brake is set correctly. If the device can be pushed, the parking brake must be readjusted by an authorised service centre.

Check the foot brake (if existing)

Check if the drive lever returns to neutral position (parking brake) when the brake pedal is actuated.

Grease lubrication

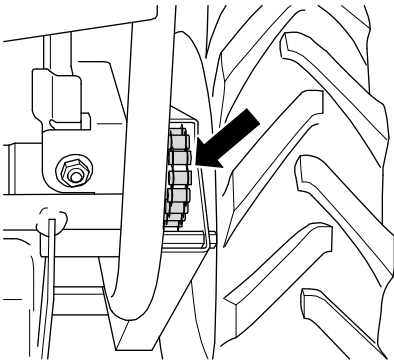


At each front wheel stub axle, a grease nipple is provided.

1. Clean the grease nipples.
2. Lubricate the grease nipples with a hand grease gun (1-2 strokes).
3. Remove any excess grease that has squeezed out from the bearing points.

Chain lubrication

Only for devices with differential lock:



The chains to the right and to the left of the differential lock must be lubricated at regular intervals. We recommend using biodegradable chain spray.

Checking the blade



Danger!

Improperly mounted and maintained blades pose a severe injury hazard. Work at the blade shall only be performed by an authorised service centre.



Use solid gloves when you check the blade.

Work at the blade requires specific expertise because an unbalance inspection is necessary and the torques must be observed.

Check the blade and all fastening elements for wear, damage and cracks

- each time before and after you mow.
- if there are noticeable changes.

All shown blade parts and their fastening elements must be changed

- if damage or cracks are detected.
- at least once a year or every 50 operating hours, no matter if wear does exist or not. The material weakens, can suffer cracks, endangering people and material assets.

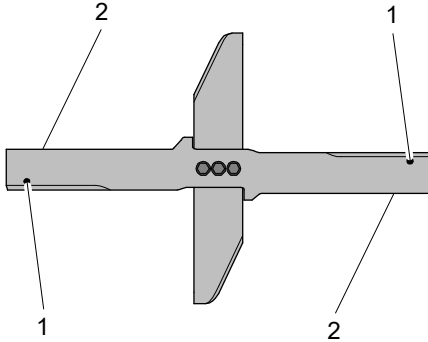
Vibrations are an indication that

- the blade is worn excessively or on one side or
- damage to the engine or cutter deck fastening.

Blades that are sharpened improperly increase the workload of the devices and can result in vibration cracks or breaks.

Ejected broken pieces can cause severe injuries.

Blade change



It is absolutely necessary to change the blade:

- When one of the wear markings (1) was reached. Original blades are engraved with wear markings (marking in form of a ball-shaped imprint on the rear side of the blade).
- When the thickness of the blade at the rear edge of the vane (2) or at another point is below 1 mm (exception: cutting edge).

Original blade

An original AS-blade is engraved with:

AS XXXXXXXX

The engraving shows the spare part number.

Checking the blade clutch

Check the blade clutch for proper function by disengaging the blade. The blade must come from full speed to a standstill in less than 5 seconds. Contact an authorised service centre if this is not the case.

Maintaining the engine



Danger!

If the speed of rotation is set too high, objects can be ejected. The engine can be damaged and noise pollution increases.

Do not change the basic setting of the carburetor or the speed control.

The engine manufacturer has prepared the operating manual of the engine. The manual contains all maintenance requirements and warranty conditions for the engine. If warranty work at the engine is required, contact your authorised service centre or the next authorised dealer for engines.

To ensure a long service life of the engine, sufficient engine cooling is required.

Keep the

- engine cover (ventilation grid),
 - silencer (protective grid) and
 - cooling fins of the engine
- clean at all times.

Checking the engine oil level

Never allow the oil level to be too low otherwise the engine can be damaged. Never fill in too much oil. Otherwise, there is the risk that the oil enters and destroys the air filter.

For this, observe the attached operating instructions of the engine.

Checking the spark plugs



Danger!

The ignition system generates an electromagnetic field.

Wearers of pacemakers must not work on live parts.

Soiled spark plugs reduce the engine output. Clean the electrode of the spark plug with a brass wire brush. Check the electrode gap (see operating instructions of the engine manufacturer). Make sure that the insulator around the electrode is not damaged. Never use a damaged spark plug.

Tighten the spark plug using the correct torque (see operating instructions of the engine manufacturer).

Maintaining the air filter



Danger!

Cleaning agents pose a fire and explosion hazard.

Never clean the air filter with flammable solvents.

Make sure that the air filter is always clean. A dirty air filter reduces the engine power and leads to increased engine wear and fuel consumption. Independent of the operating hours, change the filter insert at least once a year. Do not operate the engine without air filter.

For this, observe the attached operating instructions of the engine.

Checking and charging the battery



Danger!

When the battery is being charged, explosive gases escape.

Never charge the battery close to flames. Avoid sparking and do not smoke.



Caution!

When the battery is connected, there is a risk of short circuit.

Do not put tools or metal objects onto the battery. Observe the assembly order when connecting and disconnecting the battery.

If the starter does not get the engine going or only insufficiently, charge the battery.

The battery is maintenance-free and gas-tight. For charging the battery, you require a special charging system. Battery chargers for car batteries are not suitable!

The charging current must not exceed the maximum of 3 ampere, otherwise, the battery heats up too much!

Use electronically controlled charging systems. These charging systems detect the connected battery and charge it with the required charging current, terminating the charging process when the battery is full.

Charge the battery before you put the device away for winter storage. A fully charged battery lasts for approx. 4 months before it needs to be recharged.

Beware! Never confuse the positive and negative poles.

1. Pull the tank out of the holders and put it to the right.
2. Disconnect the black cable (-).
3. Disconnect the red cable (+).
4. Dismantle the battery from the device.
5. Charge the battery.
6. Mount the battery into the device.

7. Connect the red cable (+).
8. Connect the black cable (-).
9. Remount the tank.

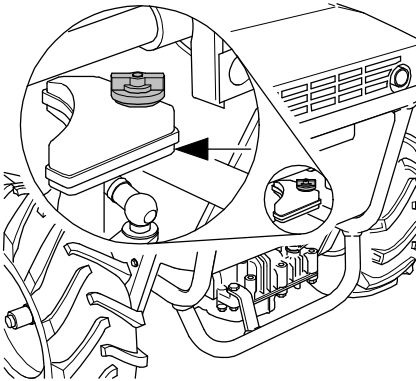
Hydrostat transmission



Caution!

If oil leaks, there is a risk of environmental pollution.

Check the hydraulic drive system for leaks before and after mowing.



In warmed up condition, there may be oil in the compensation tank. In cold condition, the compensation tank is empty.

The oil change must be carried out by an authorised service centre (see Maintenance table).

A between check of the oil level is not required.

Check if the gearbox fan is undamaged.

The hydrostatic drive generates a monotone working noise that gets louder as the load is increased (e.g. in steep terrain). If the working noise changes, if it gets irregular or very loud, let the hydrostatic drive cool down.

If the change working noise still exists, have the device checked by an authorised service centre.

Assembly

Scope of delivery

The device is shipped in a carton on a pallet. The scope of delivery included:

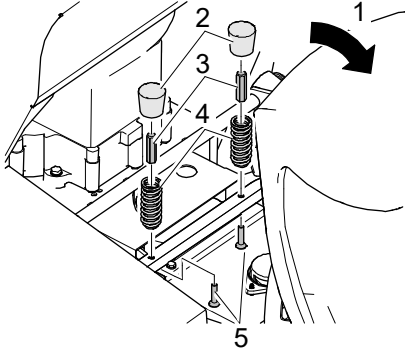
- The device.
- This operating manual.
- Manufacturer's certificate.
- Tool bag.
- Steering wheel.
- Seat springing.
- Ignition key.
- Operator's manual of the engine manufacturer.

Unpacking

1. Remove the carton and the film.
2. Check the air pressure of all tires (see Technical data).

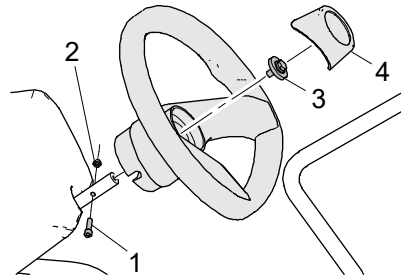
Mounting

Mounting the seat suspension



1. Fold the seat (1) forward.
2. Remove the blue protective film.
3. Move the lever for the cutting height adjustment to the lowest cutting position (level 1).
4. Insert the screw (5) from the bottom through the crossbar.
5. Screw the seat spring (4) onto the screw (5) from the top by using the nut (3).
6. Plug on the cap (2).
7. Repeat the steps 4-6 with the second seat spring.
8. Fold the seat (1) backward.

Mounting the steering wheel



1. Insert the screw (1) through the steering wheel and the steering column.
2. Tighten the central fixing screw (3) and the nut (2).
3. Screw the nut (2) onto the screw (1).
4. Plug on the cap (4).
5. Release the parking brake, unlock the drive and push the mower off the pallet.
6. Relock the drive.

Storage

Storing the device

Keep the device in a closed, dry, and well ventilated room and out of reach of children. Always eliminate all problems of the device before you store it so that the device is always in a safe-to-operate state. Let the engine cool down before you store the device in closed rooms.

Also observe the notices on storage in the attached operating instructions by the engine manufacturer.

Longer storage

1. Observe the safety instructions regarding the handling of fuel.
2. Draining fuel tank: Put a piece of a tube on the fuel valve and fill the fuel in an adequate fuel container.
3. Emptying carburetor: Start the engine and let it run until it stops on its own.
4. Clean the device thoroughly.
5. Touch up defects in painting (for spray paint, see Accessories).
6. Preserve the engine:
 - Unscrew the spark plug.
 - Fill a tablespoon of engine oil into the spark plug opening.
 - Briefly actuate the starter (oil is distributed in the cylinder).
 - Screw the spark plug back in.
 - Do not put the spark plug connector on!
7. Remove the ignition key and keep it separate from the device.

In autumn, have your device checked by an authorised service centre!

Also observe the notices on storage in the attached operating instructions by the engine manufacturer.

Restarting

If you want to start the device after a longer storage, carry out the tasks described in chapter Maintenance.

Spare parts

The reliable and safe operation of the device also depends on the quality of the spare parts used. Only use original spare parts and accessories that were approved by "AS-Motor Germany". When foreign parts are installed, the warranty and guarantee shall be void for the foreign part and for the device and for any resulting damage.

Inform your authorised service centre about the device type and serial number of your devices when you order spare parts.

Wear parts

Some parts are wear parts. They wear during use and must be replaced. The warranty does not cover the following parts:

Blades, cutting blades, cutter bars, blade bolts, sliding plates, V-belt, chains, Bowden cables, starter ropes, pressure plates, air filters, spark plugs, disc springs, lock washers, fuses, discs, thrust plates, pressure discs, protection skirts, impact protection, wheels, tires.

Disposal

The device cuts and shreds the plant material in a single operation. Shredded plant material decomposes quickly, can be utilized as fertilizer, and, therefore, be left on the ground.

Dispose of waste oil and fuel in accordance with the local regulations or return it to an oil shop.

Packaging, device, and accessories are made of recyclable materials and must be disposed of accordingly.

Warranty

Please see our AS-Motor website for warranty information.

Please print out the documents that you receive during the online registration. Keep them together with your sales receipt.

Troubleshooting

The following table contains the most frequent problems and their elimination. If more problems occur, contact the closest authorised service centre.

You can find an authorised service centre on our home page www.as-motor.de.

Problem	Possible cause	Remedy
Starter does not turn	Safety switches are not actuated.	<ul style="list-style-type: none"> – Move drive lever to neutral position. – Move cutting height adjustment to transport position. – Put driver in seat to activate seat contact switches.
	Battery is empty: – Ignition key was not in position "Off". – Standstill period was too long.	Charge the battery (see Checking the battery) or have authorised service centre do so.
	Fuse is defective.	Replace (if necessary, have authorised service centre do so).
	Battery is defective.	Replace the battery (authorised service centre).
Engine does not start	Fuel valve is closed.	Open fuel valve.
	No fuel is in the tank.	Refill fuel.
	Choke is open.	Close the choke.
	Device was tilted – oil leaked into the air filter.	Replace air filter, unscrew spark plugs and start several times when the fuel valve is closed, dry the spark plugs and screw them back in.
	Engine was flooded due to too many start attempts.	Unscrew spark plugs and start several times when the fuel valve is closed, dry the spark plugs and screw them back in.
	Spark plug connector is pulled off.	Observe the safety instructions! Put spark plug connector back on.
	Air filter is dirty.	Clean air filter (see also Maintenance).
	Spark plugs are dirty, damaged, or incorrect electrode gap.	Clean spark plugs and check electrode gap (see Maintenance). Replace spark plugs if necessary.
	Housing of the mower is jammed.	See Maintenance.

	Poor quality, dirty, or old fuel.	Clean fuel system (authorised service centre). Always use fresh fuel.
Engine starts badly or runs irregularly	Choke is closed.	Open the choke.
	Air filter is dirty.	Maintain air filter (see Maintenance).
	Poor quality, dirty, or old fuel.	Always use fresh fuel.
	Spark plug is dirty, damaged, or incorrect electrode gap.	Clean spark plug and check electrode gap (see Maintenance). Replace spark plug if necessary.
Device does not move	The drive is unlocked.	Lock the drive.
	Hydrostatic drive is overheated.	Cool down (see Maintenance).
Blade cannot be engaged	Lever for cutting height adjustment in transport position.	Lower lever for cutting height adjustment to the desired cutting height.
The blade does not rotate	V-belt is insufficiently tensioned or damaged.	Authorised service centre.
	Bowden cable is defective.	Authorised service centre.
Strong vibrations during operation	Unbalance at the blade caused by incorrect sharpening or chips on the blade.	Have blade resharpened and balanced by an authorised service centre. Replace a damaged blade immediately.
	Blade drive shaft is bent due to collisions with foreign objects.	Authorised service centre.
	Engine fastening is loose.	Authorised service centre.
	Blade fastening is loose.	Authorised service centre.
Irregular noises	Loose fastening elements.	Authorised service centre.
	Silencer is defective.	Authorised service centre.
Engine is smoking	Air filter is dirty or drenched with oil.	Maintain or replace air filter (see Maintenance).
	Oil level is too high.	Have authorised service centre lower the oil level up to the marking.
Engine gets hot	Ventilation grid is dirty.	Clean ventilation grid.
	Oil level in the engine is too low.	Refill engine oil (see operating instructions of the engine manufacturer).
	Cooling fins of the engine are dirty.	Have cooling fins cleaned by authorised service centre.

Uneven cut, lawn becomes unsightly	Blade is dull or worn.	Have blade resharpened and balanced by an authorised service centre. Replace a damaged blade immediately.
	Speed is too high proportionately to the cutting height.	Reduce speed and/or select the correct cutting height.
	Housing of the mower is heavily contaminated.	Clean.
	Different tire pressure.	Check the tire pressure.
	Mower housing is not parallel to the ground.	Adjust (authorised service centre).
Mulching result with high plant material not satisfactory	Speed is too high.	Reduce speed.
Mulching result with low plant material not satisfactory	Plant material is ejected too quickly.	Increase speed.
Housing is jammed	Mowed grass was too long or too damp.	Adjust cutting height and mowing speed to the mowing conditions.
	Blade is worn.	Authorised service centre.
	Engine speed is too low despite full power.	Authorised service centre.
The device does not stop when the brake is actuated	Brake is adjusted incorrectly, worn, or defective.	Authorised service centre.
The engine does not switch off	Switching off system is defective.	Close the fuel valve. Authorised service centre.
The tires become flat	Thorns or sharp objects damage the tires.	If necessary, use tire protection gel (authorised service centre).

Technical data

Type	AS 800 FreeRider	AS 799 Rider
Range of application (temperature)	(0 - 30 °C) For temperatures below 5 °C, observe the engine manufacturer's information regarding the engine oil.	
Engine, type	One cylinder four stroke engine	One cylinder four stroke engine
Manufacturer	Briggs & Stratton	Briggs & Stratton
Type	Series 3 Intek	Series 3 Power Built
Cylinder capacity	344 cm ³	344 cm ³
Performance	7.6 kW (10.3 PS)	6.5 kW (8.8 PS)
Engine speed	3200 min ⁻¹	3200 min ⁻¹
Starting device	Electric start	
Battery	12 V, approx. 19 Ah	
Fuses		
General maxi fuse	15 A	
Fuse controller generator	20 A	
Traction drive	Hydrostatic transmission with differential lock.	Hydrostatic transmission
Speed forward	0 to 8 km/h	0 to 8 km/h
Speed reverse	0 to 6 km/h	0 to 6 km/h
Maximum area coverage	approx. 6800 m ² /h	
Turning radius	approx. 1.2 m	
Front axle	Floating.	
Seat	Moveable, spring-loaded.	
Cutting device, type	Cutter bar and mulching blade.	Cutter bar
Cutting width	80 cm	80 cm
Cutting height	35 to 85 mm in 4 levels	35 to 85 mm in 4 levels
Drive of cutting tool	V-belt	V-belt
Clutch of cutting tool	Belt tension clutch	Belt tension clutch
Growth height	up to approx. 80 cm	up to approx. 60 cm

Type	AS 800 FreeRider	AS 799 Rider
Measures and weights		
Weight	227 kg	203 kg
Transport sizes with packaging L/W/H	1860/1100/1040 mm	1860/1100/1040 mm
max. tyre dimensions L/W/H	1700/870/960 mm	1700/870/960 mm
max. towing load	100 kg	100 kg
max. towbar download	25 kg	25 kg
Capacities		
Fuel tank	15 litres (unleaded regular petrol)	
Engine oil	approx. 1.4 litres SAE 30 (see also Checking the oil level)	
Transmission oil (hydrostat)	1.95 litres SAE 10W30 or 10W60	
Sound level		
according to DIN EN ISO 5395		
measured sound level L_{WA}	97.9 dB	97.7 dB
measured sound level L_{WA}	99 dB	99 dB
Sound level at operator station L_{pA}	85 dB	87 dB
Vibration emission value		
according to DIN EN ISO 5395		
Hand-arm-vibrations $a_{h,w}$	1.7 m/s ²	1.1 m/s ²
Measurement uncertainty U	1.5 m/s ²	1.0 m/s ²
Whole body vibration $a_{h,w}$	1.3 m/s ²	0.5 m/s ²
Measurement uncertainty U	0.5 m/s ²	0.3 m/s ²
Tyre pressure		
Front	1 bar	
Rear	1,5 bar	

Accessories

Trailer:	G06800003
Trailer hitch:	G06800004
Snow remover blade without adaptor:	G06800002
Adaptor for snow removal blade:	G06837017
Snow chains with changeover set (set):	G06837015
Lawn tyres front (set):	G06621001
Lawn tyres rear (set):	G06621002
Spray paint 400 ml, colour orange:	G00011050
Operating hours counter:	G06927008
Clinometer:	G06950027
Seat spring assembly:	G06800103

Declaration of conformity

We declare that the lawnmowers

Type	AS 800 FreeRider	AS 799 Rider
Cutting width	80 cm	80 cm
starting from serial no.	030117100001	030017100001

as brought into circulation by us conform to all relevant safety and health requirements of the EC directives listed.

- 2006/42/EC
- 2000/14/EC
- 2014/30/EU

Function:

The device is intended for cutting and mulching grass or similar vegetation in well-maintained grounds that must be cut at least once a year.

Applied standards:

DIN EN ISO 5395

Applies to 2000/14/EC:

Applied conformity assessment procedure

Annex VI

Type	AS 800 FreeRider	AS 799 Rider
Measured sound level	97,9 dB	97,7 dB
Guaranteed sound power level	99 dB	99 dB

Notified body:

DPLF, 64823 Groß-Umstadt, EC identification number 0363

Place where all technical records are filed:

AS-Motor Germany GmbH & Co. KG
 Ellwanger Straße 15
 D-74424 Bühlertann

Bühlertann, October 2017



Eberhard Lange
 Managing director



By proxy Frank Einsiedler
 Head of development



THE HIGH GRASS MOWER AND 2 STROKE ENGINE MANUFACTURE

AS-Motor is your premium manufacturer for lawn and high grass mowers as well as 2 stroke engines. We offer our customers professional technology for steep slopes, rough terrain, and lawn care. Our extensive product range which includes hand-held entry-level devices up to the world's first all-wheel ride-on mower with remote control will always offer private customers, municipalities service providers the right product. For more than 55 years, we have been developing and producing with a high production depth in Southern Germany and supply our dealer network in more than 30 countries all over the world.

Mulching mower	Mulching mower – the time-saving alternative! AS-Motor mulching mowers shred the grass to create such a fine mulch, almost an "invisible" fertiliser, that sinks right away back into the lawn. Disposal of the cuttings is not required.
Professional lawn mower	Professional lawn mowers with rear discharge for all every requirement, even with all-wheel drive, brake and reverse gear.
Brush cutter®	An agile lawn mower for maintenance of extensive grassed areas. The Allmäher® reliably mows and mulches metre-high grass, brushes and weeds.
Flail mower	High grass with undergrowth, steep slope or extensive areas in unknown terrain? The movably mounted flail blades of the AS-Motor flail mower give way to rocks and obstacles and chop the cuttings several times over.
Ride-on brush cutter	If extensive areas, weeds and undergrowth up to 1.2 m, the AS-Motor all-wheel mowers are also perfect for steep and even extremely steep terrain. Ease of use and high area performance combined in one compact ride-on mower. For more safety, comfort and efficiency in difficult terrain we have developed the innovative and the world's first remote controlled ride-on mower.
Rotary mower	The cost-effective alternative to the cutter-bar mower. Also ideal for feed production. The grass is not shredded but deposited in straight rows as a windrow next to the machine.
Weed remover	Careful and chemical-free weed removal. The AS-Motor weed removers "WeedHex" mechanically clean paved areas and curb stones from growing weeds – quickly, safely, and efficiently.